

Yawal USA

PRODUCT CHEAT SHEETS



BOLD AND BRILLIANT
WINDOWS AND DOORS

CHEAT SHEET – SLIDING & LIFT'N'SLIDING DOORS



SLIDING & LIFT'N'SLIDING DOORS – PARAMETERS

	MOREVIEW	MOREVIEW S-LINE	PERFORMANCE LIFT'N'SLIDE	PERFORMANCE SLIM MULL	BI FOLD DOORS	ECO SLIDER
Air Permeability	A3	A3	A3	A3	A3	A3
Design Pressure	LC 40 psf	LC 40 psf	CW 60 psf	CW 60 psf	LC 35 psf	LC 50 psf
Water Tightness	5 psf	5 psf	12 psf	12 psf	5 psf	7,5 psf
Acoustic Insulation	STC up to 42 dB	STC up to 42 dB	STC up to 47 dB	STC up to 42 dB	STC up to 42dB	STC up to 40dB
U value	from 0.12 Btu/hft ² F	from 0.12 Btu/hft ² F	from 0.12 Btu/hft ² F	from 0.12 Btu/hft ² F	from 0.15 Btu/hft ² F	from 0.23 Btu/hft ² F
Max panel weight	3300 lbs	3300 lbs	1000 lbs	1000 lbs	440 lbs	440 lbs
Max panel height	16 ft	16 ft	11 ft	11 ft	12 ft	8 ft
Max panel width	21 ft	21 ft	11 ft	11 ft	4 ft	4 ft

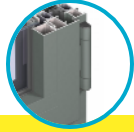
SLIDING & LIFT'N'SLIDING DOORS – KEY FEATURES

	MOREVIEW	MOREVIEW S-LINE	DP180 PANO LIFT'N'SLIDE	DP180 PANO SLIM MULL	BI FOLD DOORS	ECO SLIDER
ADA threshold		✓	✓	✓		
Concealed track		✓	✓	✓		
Pocket	✓	✓	✓			
Operable corner	✓	✓	✓			
Fixed corner	✓	✓	✓			
Motorized	✓	✓	✓	✓		
SDL	✓	✓	✓	✓	✓	✓
Single track	✓	✓	✓		✓	
Double track	✓	✓	✓	✓		✓
Triple track	✓	✓	✓			✓
Multi track	✓	✓	✓			

CHEAT SHEET - WINDOWS



WINDOWS – OPERATION TYPES



Visible hardware



Concealed hardware



Friction hardware

	Inwards opened			Outwards opened			Inwards opened			Outwards opened	
	Turn or turn-tilt or tilt-turn	Bottom hung	Double window	Casement	Top hung	Double window	Turn or turn-tilt or tilt-turn	Bottom hung	Double window	Turn	Top hung
PASSIVE	✓	✓	✓				✓	✓	✓		
PERFORMANCE	✓	✓	✓	✓	✓	✓	✓	✓	✓	✓	✓
MOREVIEW	✓	✓	✓	✓	✓	✓	✓	✓	✓	✓	
INDUSTRIAL	✓	✓	✓	✓	✓	✓	✓	✓	✓	✓	✓
ECO	✓	✓	✓	✓	✓	✓	✓	✓	✓	✓	✓

WINDOWS – PARAMETERS

		PASSIVE	PERFORMANCE	INDUSTRIAL	MOREVIEW	ECO
Air Permeability		A3	A3	A3	A3	A3
Design Pressure	Operable	65 psf	65 psf	50 psf	40 psf	65 psf
	Fixed	75 psf	75 psf	65 psf	60 psf	75 psf
Water Tightness	Inwards	15 psf	15 psf	12 psf	9 psf	15 psf
	Outwards	15 psf	15 psf	15 psf	12 psf	15 psf
Acoustic Insulation		STC up to 48 dB	STC up to 48 dB	STC up to 46 dB	STC up to 44 dB	STC up to 46 dB
U value		from 0.08 Btu/hft ² F	from 0.12 Btu/hft ² F	from 0.13 Btu/hft ² F	from 0.15 Btu/hft ² F	from 0.17 Btu/hft ² F
Max fixed weight		1100 lbs	1100 lbs	900 lbs	660 lbs	1100 lbs
Max operable panel weight		660 lbs	660 lbs	440 lbs	330 lbs	440 lbs
Max height		10 ft	10 ft	10 ft	9 ft	8 ft
Max width		5 ft	5 ft	5 ft	5 ft	5 ft




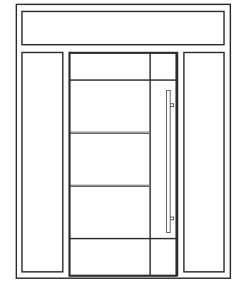

WINDOWS – KEY FEATURES

	PASSIVE	PERFORMANCE	INDUSTRIAL	MOREVIEW	ECO
Frame width	2 11/32" (59,4mm)	2" (52,1mm)	1 3/8" (36mm)	1 1/8" (28,5mm)	2" (52,1mm)
Frame depth	4" (102mm)	3" (77mm)	3" (77mm)	4 1/8" (104,5mm)	2 7/16" (62mm)
Fold width (frame + sash)	3 3/4" (97mm)	3 1/2" (89mm)	2 13/16" (71.4mm)	2" (50mm)	3 1/2" (89mm)
Mull width	3 5/8" (91,7mm)	3 1/32" (77mm)	2 7/64" (53,4mm)	1 3/4" (44mm)	3 1/32" (77mm)
Gaskets	5	4	5	3	4
SDL bars	✓	✓	✓	✓	✓
Glazing	Triple Quad	Double Triple	Double Triple	Double Triple	Double
Nailfin	✓	✓	✓		✓
Installation types	Brackets Through frame Nailfin	Brackets Through frame Nailfin	Brackets Through frame Nailfin	Brackets Through frame Nailfin	Brackets Through frame Nailfin
Shadow box	✓	✓	✓	✓	✓

CHEAT SHEET - DOORS



DOOR SYSTEMS – OPERABLE TYPES

	Visible hardware							
	Standard hinges		Roller hinges		Concealed hardware		Features	
	Inswing	Outswing	Inswing	Outswing	Inswing	Outswing	Sidelights/ Transoms	Lockbox
								
PASSIVE	✓	✓	✓	✓	✓	✓	✓	
PERFORMANCE	✓	✓	✓	✓	✓	✓	✓	
MOREVIEW			✓	✓			✓	✓
ECO	✓	✓	✓	✓	✓		✓	
INDUSTRIAL			✓	✓			✓	

DOORS – PARAMETERS

	PASSIVE	PERFORMANCE	INDUSTRIAL	MORE VIEW	ECO
Air Permeability	A3	A3	A3	A3	A3
Design Pressure	CW 60 psf	CW 60 psf	LC 60 psf	LC 50 psf	CW 60 psf
Water Tightness	9 psf	9 psf	9 psf	9 psf	9 psf
Acoustic Insulation	STC up to 45 dB	STC up to 44 dB	STC up to 42 dB	STC up to 42 dB	STC up to 42dB
U value	from 0.12 Btu/hft ² F	from 0.15 Btu/hft ² F	from 0.17 Btu/hft ² F	From 0.20 Btu/hft ² F	from 0.20 Btu/hft ² F
Max panel weight	550 lbs	550 lbs	500 lbs	300 lbs	550 lbs
Max panel height	10 ft	10 ft	10 ft	10 ft	10 ft
Max panel width	4.5 ft	4.5 ft	4.5 ft	5 ft	4.5 ft

DOORS – KEY FEATURES

	PASSIVE	PERFORMANCE	INDUSTRIAL	MOREVIEW	ECO
Frame width	2 5/8" (66,7mm)	2 5/8" (66,7mm)	2" (48,2mm)	1 3/8" (34,7mm)	2 5/8" (66,85mm)
Frame depth	4 1/32" (102mm)	3" (77mm)	3" (77mm)	3 13/16" (97,5mm)	2 1/2" (62mm)
Combination width (frame + sash)	6 32/32" (154,4mm)	5 1/2" (138,4mm)	4 43/64" (118,5mm)	4 1/16" (102,85mm)	5 1/2" (138mm)
ADA Threshold		✓		✓	✓
SDL bars	✓	✓	✓	✓	✓
Glazing	Triple Quad	Double Triple	Double Triple	Double Triple	Double
Nailfin					
Installation types	Brackets Through frame	Brackets Through frame	Brackets Through frame	Brackets Through frame	Brackets Through frame
Commercial hardware	✓	✓			✓

THANK YOU

Contact Us

Yawal USA

11 West Hudson Avenue

Englewood, NJ 07670

T. 201 753 1295

E-Mail: office@yawalusa.com



BOLD AND BRILLIANT
WINDOWS AND DOORS